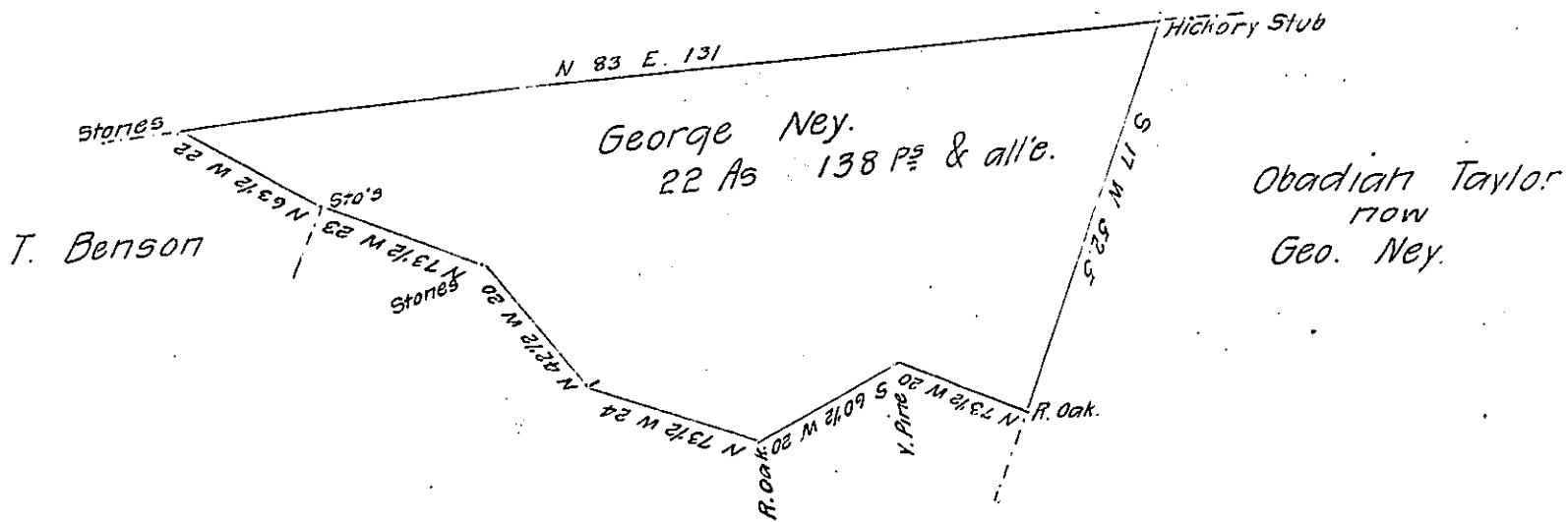


B. Earl
now
D. Michael's



John D. Sleight

Draft of a tract of land containing twenty-two acres, one hundred and thirty-eight perches and allowance of six per cent for roads &c. situate in Eaton township in the county of Wyoming surveyed the 9th day of April 1869 in pursuance of a warrant granted to George Ney dated the 27th day of February 1869.

C. W. Hine - C. S.

To J. M. Campbell Esq
Surveyor General.

IN TESTIMONY that the above is a copy of the original remaining on file in the Department of Internal Affairs of Pennsylvania, made conformably to an Act of Assembly approved the 16th day of February, 1833, I have hereunto set my Hand and caused the Seal of said Department to be affixed at Harrisburg, this thirty-first day of March 1906

George S. Brown
Secretary of Internal Affairs.